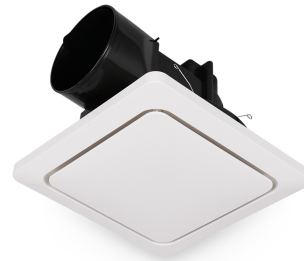


## DECLARATION OF COMPLIANCE FOR LUMINAIRES

**Issuer:** Evolt Pty Ltd  
**Address:** Unit 2C, 40 Barracks Road  
 Wacol, QLD 4076, Australia



PRODUCT INFORMATION		
BRAND	MODEL	SKU
Atomair	ECLIPSE/290/WH/SQ	16785

COMPLIANCE	
Safety Report	WTF22F12251312J
EMC Report	WTF22F12251316E
Certification	GMA-515378-EA
Standards	AS/NZS 60335.1 AS/NZS 60335.2.80 AS/NZS CISPR 14.1

OPERATIONAL INFORMATION	
IP Rating	IPx4
Working Temp Range	-10 to 40 °C
Input voltage	230Vac
Input Frequency	50 Hz
Product Type	EXHAUST

## DECLARATION OF COMPLIANCE

On the basis of the test reports specified, I declare that the luminaire described in this document complies with the requirements of electrical safety and the use of the RCM mark.

**Title:** Managing Director **Date:** 05/01/2022

**Signature:** 