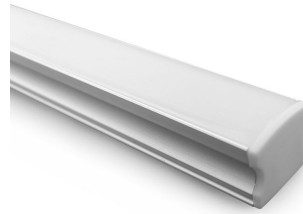


## DECLARATION OF COMPLIANCE FOR LUMINAIRES

**Issuer:** Evolt Pty Ltd  
**Address:** Unit 2C, 40 Barracks Road  
 Wacol, QLD 4076, Australia



### PRODUCT INFORMATION

BRAND	MODEL	SKU
Atom	AT9235/2M/LFIP20-9.6-W2780	20776

### COMPLIANCE

Standards	AS/NZS 61347.1 AS/NZS 61347.2.13
-----------	-------------------------------------

### OPERATIONAL INFORMATION

Driver Model	AT9643/20
IP Rating	IP20
Working Temp Range	0 to 40 °C
Input voltage	180-240
Input Frequency	50 Hz
Driver Type	Fixed output
Product Type	EXTRUSIONS

## DECLARATION OF COMPLIANCE

On the basis of the test reports specified, I declare that the luminaire described in this document complies with the requirements of electrical safety and the use of the RCM mark.

**Title:** Managing Director **Date:** 05/01/2022

**Signature:**

