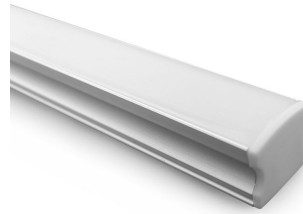


## DECLARATION OF COMPLIANCE FOR LUMINAIRES

**Issuer:** Evolt Pty Ltd  
**Address:** Unit 2C, 40 Barracks Road  
 Wacol, QLD 4076, Australia



### PRODUCT INFORMATION

BRAND	MODEL	SKU
Atom	AT9235/2M/AT9253/RGB/IP20	20780

### COMPLIANCE

**Standards** AS/NZS 61347.1  
 AS/NZS 61347.2.13

### OPERATIONAL INFORMATION

<b>Driver Model</b>	AT9643/60
<b>IP Rating</b>	IP20
<b>Working Temp Range</b>	0 to 40 °C
<b>Input voltage</b>	180-240
<b>Input Frequency</b>	50 Hz
<b>Driver Type</b>	Fixed output
<b>Product Type</b>	EXTRUSIONS

## DECLARATION OF COMPLIANCE

On the basis of the test reports specified, I declare that the luminaire described in this document complies with the requirements of electrical safety and the use of the RCM mark.

**Title:** Managing Director **Date:** 05/01/2022

**Signature:**

