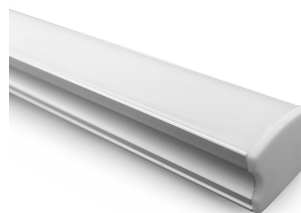


## DECLARATION OF COMPLIANCE FOR LUMINAIRES

**Issuer:** Evolt Pty Ltd  
**Address:** U5/105a Vanessa Street  
 Kingsgrove, NSW 2208, Australia



PRODUCT INFORMATION		
BRAND	MODEL	SKU
Atom	AT9235/1M/LFIP20-9.6-W2780	20764

COMPLIANCE	
Standards	AS/NZS 61347.1 AS/NZS 61347.2.13

OPERATIONAL INFORMATION	
Driver Model	AT9643/20
IP Rating	IP20
Working Temp Range	0 to 40 °C
Input voltage	180-240
Input Frequency	50 Hz
Electrical Rating	Class II
Driver Type	Fixed output
Product Type	EXTRUSIONS

## DECLARATION OF COMPLIANCE

On the basis of the test reports specified, I declare that the luminaire described in this document complies with the requirements of electrical safety and the use of the RCM mark.

**Title:** Managing Director **Date:** 05/01/2022

**Signature:** 