

atom'

LED STRIPS CATALOGUE

# Atmosphere by design



evolt



QUALITY, RELIABILITY, VALUE

atom<sup>i</sup>

## Atmosphere by design

Orchestrate the look and feel of any space with Atom's LED strip lighting. This commercial range of quality 24V LED strips is available in IP20, or IP54 and IP67 weatherproof ratings in a selection of colour options.





# What are LED strip lights?

Sleek and stylish, LED strips are the modern lighting accessory. Available in a selection of colours and styles, they add a continuous discreet line of ambient light, popular in kitchens, bedrooms and media rooms.



## ATMOSPHERE BY DESIGN

# Getting started with strip lighting

LED strips are essentially a flexible circuit board populated with LEDs. They come with pre-attached strong 3M™ branded backing tape and can be easily fitted to almost any surface. In a wide range of colour temperatures for use both indoor and out, they bring a subtle, continuous line of light to a room.

**Every project is unique, so choosing the right product is important.**

- Where will you be installing the strips?
- What will you be lighting?
- What atmosphere are you trying to create?
- Will there be other lights in the area?



### Cut to length

Atom strips can be cut to length or even joined to suit the space. Different for each product, cut lengths are clearly marked on product, packaging and in specification documentation.



### Flexible

Don't be limited by curved surfaces. Atom Strips come in a flexible casing and can be bent vertically up to 90°.



### Low Profile

Less than 2mm in height for selected models. Atom strips can fit into tight spaces and be easily hidden from view.



### Dimmable

Choose a controller and driver to enable the option to dim your strip lighting.



### Weatherproof

Don't be limited to indoors. Selected Atom strips come with an IP54 or IP67 rating, making them weatherproof and suitable for bathroom or outdoor applications.



### Colour options

Create warm, cool or daylight tones, or pop with eye catching RGB. The extensive colour options in the Atom strips range make the opportunities endless.



### Pureline

For extra elegance, choose an Atom Pureline strip. A continuous light source, these strips have no dots interrupting the seamless effect.



### Easy Install

Pre-attached with quality 3M™ branded tape, Atom strips are easy to install – simply peel and stick. Strips can also be removed without damaging existing tiles, cabinets or walls.

## Handy lighting terms to know

### Correlated colour temperature (CCT)

CCT refers to colour temperature of light. Measured in units of Kelvin from a scale of 1,000 to 10,000, the higher the number, the whiter the light. Commercial and residential lighting usually falls somewhere between 2000K and 6500K. Typically, 3000K - 4000K would be used within the home to create a warm, inviting feel.

### Lumens

Lumen, denoted by the letters lm, is the measure of brightness, as visible to the human eye from a light source. The higher the lumen rating, the brighter the light will appear. One lumen is equal to roughly the amount of light given out by a candle. Products with a higher lumen/watt (lm/W) rating produce light more efficiently which reduces heat and power consumption.

### IP Ratings

Standing for Ingress Protection, IP ratings are the international standards of protection for all things electrical and mechanical. A two-digit grading system the first number between 0 and 6 measures protection from solid objects like dust and dirt. The second, between 0 and 8 measures resistance to moisture at varying intensities, angles, depths, pressure, exposure and immersion.

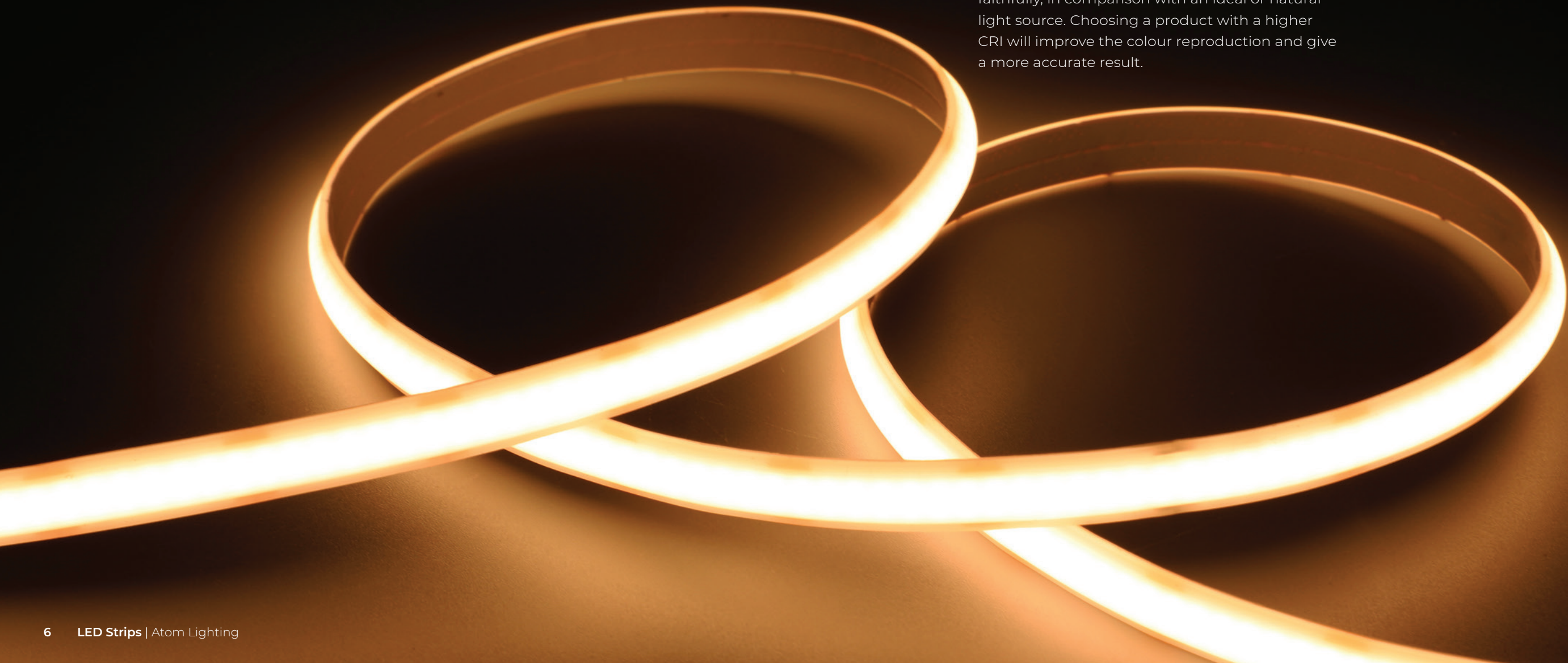
### Colour rendering index (CRI)

Colour rendering index, or CRI for short, is a quantitative measure of the ability of a light source to reveal the colours of different objects faithfully, in comparison with an ideal or natural light source. Choosing a product with a higher CRI will improve the colour reproduction and give a more accurate result.

### Pureline

The Atom Pureline LED Strip is a high-quality Dot-Free linear light solution. It uses a continual row of individually packaged LED chips covered by an extruded IP54 weatherproof housing, providing a seamless line of illumination.

Compared to standard “COB” Dot-Free IP20 strips, which can easily fail if not delicately handled, Pureline technology integrates the reliability of individually packaged LEDs with an optically controlled silicone diffuser, creating an output effect similar to a fully enclosed extrusion.

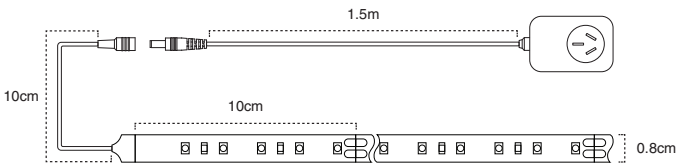






AT9208 CW

LED Strip Kit – IP54 – 4.8W/m – CW





Wattage  
up to **36W**



Efficiency  
up to **112lm/W**



IP Rating  
**IP54\***

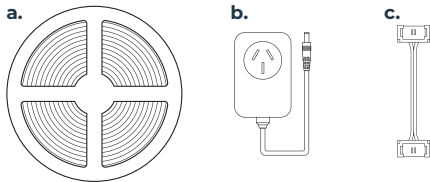
Product specification

Voltage	24Vdc
Power consumption	
AT9208/CW/KIT/5M	24W
AT9208/CW/KIT/10M	36W
Dimmable	No
Input	15cm flying lead
Length	5m & 10m
Cut length	10cm
Colour temperature	4000K
Lumens per meter	
AT9208/CW/KIT/5M	380lm
AT9208/CW/KIT/10M	288lm
Beam angle	120°
Colour rendering index	>80
LEDs/m	60pc/m
IP Rating	IP54
Lifetime Rating	L70B50 >50000 hrs @40°C L90B50>50000 hrs @40°C
Electrical classification	Class III
Weatherproof material	UV stable silicone
Power supply	
Input	230V~50Hz
Output	24Vdc
Electrical classification	Class II

Product range

Code	Description
AT9208/CW/KIT/10M SKU: 11509	10m 3.6W/m 24V LED Strip Kit IP54 - 4000K - Cool White
AT9208/CW/KIT/5M SKU: 11505	5m 4.8W/m 24V LED Strip Kit IP54 - 4000K - Cool White

Kit content



a. 5m LED Strip  
b. Power supply unit  
c. 10cm joiners (x3)

LED Strip Kits

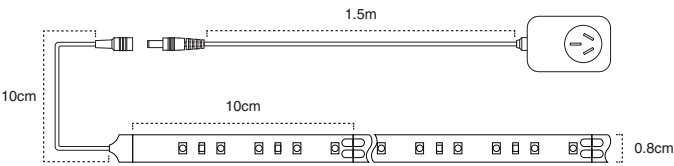
Designed for an easy DIY install, Atom LED Strip Kits include a 24V power supply, joiners, and up to 10m of LED Strip on selected models.





AT9208 WW

LED Strip Kit – IP54 – 4.8W/m – WW





Wattage  
up to **36W**



Efficiency  
up to **112lm/W**



IP Rating  
**IP54\***

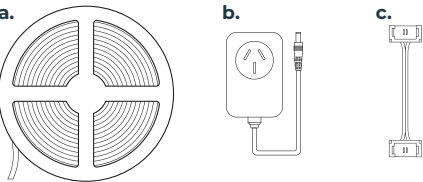
Product specification

Voltage	24Vdc
Power consumption	
AT9208/WW/KIT/5M	24W
AT9208/WW/KIT/10M	36W
Dimmable	No
Input	15cm flying lead
Length	5m & 10m
Cut length	10cm
Colour temperature	3000K
Lumens per meter	
AT9208/WW/KIT/5M	270lm
AT9208/WW/KIT/10M	380lm
Beam angle	120°
Colour rendering index	>80
LEDs/m	60pc/m
IP Rating	IP54
Lifetime Rating	L70B50 >50000 hrs @40°C L90B50>50000 hrs @40°C
Electrical classification	Class III
Weatherproof material	UV stable silicone
Power supply	
Input	230V~50Hz
Output	24Vdc 1A
Electrical classification	Class II

Product range

Code	Description
AT9208/WW/KIT/10M SKU: 11508	10m 4.8W/m 24V LED Strip Kit IP54 - 3000K - Warm White
AT9208/WW/KIT/5M SKU: 11504	5m 4.8W/m 24V LED Strip Kit IP54 - 3000K - Warm White

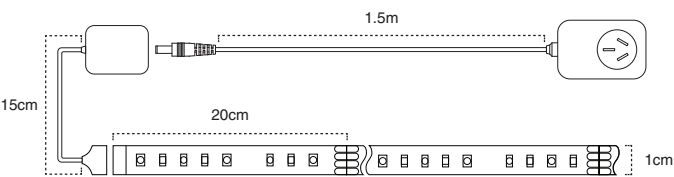
Kit content




a. 5m LED Strip  
b. Power supply unit  
c. 10cm joiners (x3)


AT9208 RGB

LED Strip Kit – IP54 – 4.8W/m – RGB





Wattage  
up to **24W**



IP Rating  
**IP54\***

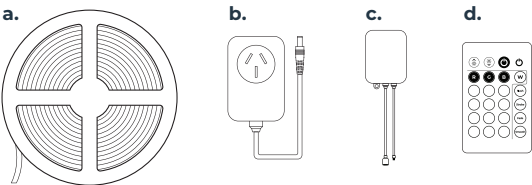
Product specification

Voltage	24Vdc
Power consumption	24W
Dimmable	Yes (using provided remote control)
Input	15cm flying lead
Length	5m
Cut length	20cm
Colour temperature	RGB
Lumens per meter	148lm
Beam angle	120°
Colour rendering index	>80
LEDs/m	60pc/m
IP Rating	IP54
Lifetime Rating	>54,000h
Electrical classification	Class III
Weatherproof material	UV stable silicone
Power supply	
Input	230V~50Hz
Output	24Vdc 1A
Electrical classification	Class II

Product range

Code	Description
AT9208/RGB/KIT/5M SKU: 11506	5m 4.8W/m 24V LED Strip Kit IP54 RGB

Kit content



a. 5m LED Strip  
b. Power supply unit  
c. PWM controller / IR receiver  
d. Remote controller

\* IP54 rating only on LED strip

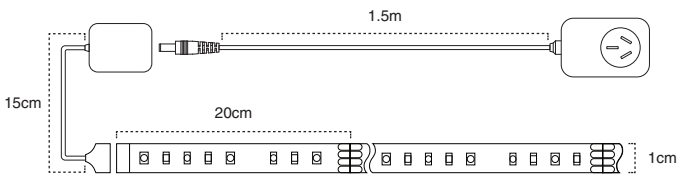
\* IP54 rating only on LED strip





### AT9208 RGBWW

LED Strip Kit – IP54 – 4.8W/m – RGBWW



⚡  
Wattage  
up to **24W**

💧  
IP Rating  
**IP54\***

#### Product specification

Voltage	24Vdc
Power consumption	24W
Dimmable	Yes (using provided remote control)
Input	15cm flying lead
Length	5m
Cut length	20cm
Colour temperature	RGB + 3000K
Lumens per meter	210lm
Beam angle	120°
Colour rendering index	>80
LEDs/m	60pc/m
IP Rating	IP54
Lifetime Rating	>54,000h
Electrical classification	Class III
Weatherproof material	UV stable silicone

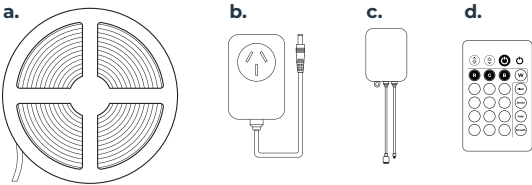
#### Power supply

Input	230V~50Hz
Output	24Vdc 1A
Electrical classification	Class II

#### Product range

Code	Description
AT9208/RGBWW/KIT/5M SKU: 11507	5m 4.8W/m 24V LED Strip Kit IP54 RGB+WW

#### Kit content



- a. 5m LED Strip
- b. Power supply unit
- c. PWM controller / IR receiver
- d. Remote controller



### IP20 LED Strips

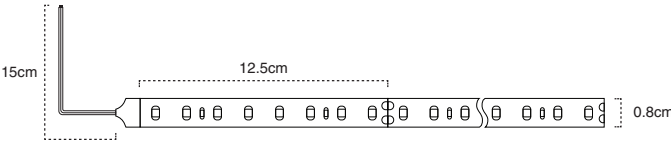
Available in multiple wattages and colour temperatures. The IP20 range of LED Strips also features a large range of supporting accessories and extrusions.





AT9251 IP20

LED Strip with cable – IP20 – 4.8W/m





Wattage  
4.8W/m



Efficiency  
up to 120lm/W



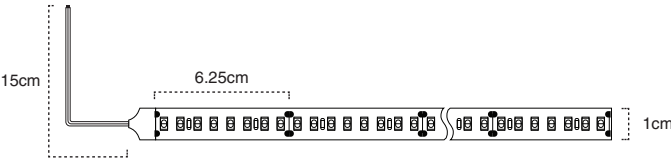
IP Rating  
IP20

Product specification	
Voltage	24Vdc
Power consumption	4.8W/m
Dimmable	Yes*
Input	15cm flying lead
Length	1m, 2m, & 5m
Cut length	12.5cm
Colour temperature	3000K, 4000K & 5000K
Lumens per meter	
AT9251/CW/IP20/1M AT9251/CW/IP20/2M AT9251/CW/IP20/5M AT9251/DL/IP20/1M AT9251/DL/IP20/2M AT9251/DL/IP20/5M	580lm
AT9251/WW/IP20/1M AT9251/WW/IP20/2M AT9251/WW/IP20/5M	550lm
Beam angle	120°
Colour rendering index	>90
LEDs/m	64pc/m
IP Rating	IP20
Lifetime Rating	L70B50 >60000 hrs @40°C L80B10 52000 hrs @40°C
Electrical classification	Class III

Product range	
Code	Description
AT9251/CW/IP20/1M SKU: 16517	4.8W/m IP20 1m LED Strip with cable - 4000K - Cool White
AT9251/CW/IP20/2M SKU: 14331	4.8W/m IP20 2m LED Strip with cable - 4000K - Cool White
AT9251/CW/IP20/5M SKU: 16533	4.8W/m IP20 5m LED Strip with cable - 4000K - Cool White
AT9251/DL/IP20/1M SKU: 14328	4.8W/m IP20 1m LED Strip with cable - 5000K - Daylight
AT9251/DL/IP20/2M SKU: 14329	4.8W/m IP20 2m LED Strip with cable - 5000K - Daylight
AT9251/DL/IP20/5M SKU: 16534	4.8W/m IP20 5m LED Strip with cable - 5000K - Daylight
AT9251/WW/IP20/1M SKU: 16516	4.8W/m IP20 1m LED Strip with cable - 3000K - Warm White
AT9251/WW/IP20/2M SKU: 14330	4.8W/m IP20 2m LED Strip with cable - 3000K - Warm White
AT9251/WW/IP20/5M SKU: 16532	4.8W/m IP20 5m LED Strip with cable - 3000K - Warm White
For all compatible accessories and drivers see pages 25-29	

AT9252 IP20

LED Strip with cable – IP20 – 9.6W/m





Wattage  
9.6W/m



Efficiency  
up to 122lm/W



IP Rating  
IP20

Product specification	
Voltage	24Vdc
Power consumption	9.6W/m
Dimmable	Yes*
Input	15cm flying lead
Length	1m, 2m, & 5m
Cut length	6.25cm
Colour temperature	3000K, 4000K & 5000K
Lumens per meter	
AT9252/CW/IP20/1M AT9252/CW/IP20/2M AT9252/CW/IP20/5M AT9252/DL/IP20/2M AT9252/DL/IP20/5M	1180lm
AT9252/WW/IP20/1M AT9252/WW/IP20/2M AT9252/WW/IP20/5M	1120lm
Beam angle	120°
Colour rendering index	>90
LEDs/m	128pc/m
IP Rating	IP20
Lifetime Rating	L70B50 >60000 hrs @40°C L80B10 52000 hrs @40°C
Electrical classification	Class III

Product range	
Code	Description
AT9252/CW/IP20/1M SKU: 16519	9.6W/m IP20 1m LED Strip with cable - 4000K - Cool White
AT9252/CW/IP20/2M SKU: 14333	9.6W/m IP20 2m LED Strip with cable - 4000K - Cool White
AT9252/CW/IP20/5M SKU: 16536	9.6W/m IP20 5m LED Strip with cable - 4000K - Cool White
AT9252/DL/IP20/2M SKU: 14334	9.6W/m IP20 2m LED Strip with cable - 5000K - Daylight
AT9252/DL/IP20/5M SKU: 16537	9.6W/m IP20 5m LED Strip with cable - 5000K - Daylight
AT9252/WW/IP20/1M SKU: 16518	9.6W/m IP20 1m LED Strip with cable - 3000K - Warm White
AT9252/WW/IP20/2M SKU: 14332	9.6W/m IP20 2m LED Strip with cable - 3000K - Warm White
AT9252/WW/IP20/5M SKU: 16535	9.6W/m IP20 5m LED Strip with cable - 3000K - Warm White
For all compatible accessories and drivers see pages 25-29	

\* Dimmable option compatible with most standard universal and trailing edge dimmers

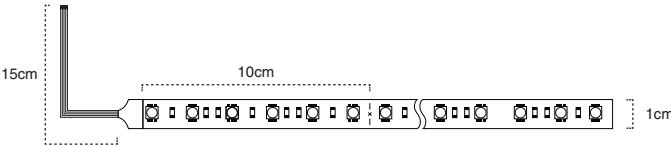
\* Dimmable option compatible with most standard universal and trailing edge dimmers





AT9253 IP20

RGB LED Strip with cable – IP20 – 14.4W/m



Wattage  
14.4W/m

IP Rating  
IP20

Product specification	
Voltage	24Vdc
Power consumption	14.4W/m
Dimmable	Yes*
Input	15cm flying lead
Length	1m, 2m, & 5m
Cut length	10cm
Colour temperature	RGB
Lumens per meter	
AT9253/RGB/IP20/1M	340lm
AT9253/RGB/IP20/1M AT9253/RGB/IP20/2M	360lm
Beam angle	120°
Colour rendering index	>90
LEDs/m	60pc/m
IP Rating	IP20
Lifetime Rating	L70B50 >48000 hrs @40°C
Electrical classification	Class III

Product range	
Code	Description
AT9253/RGB/IP20/1M SKU: 16520	14.4W/m RGB IP20 1m LED Strip with cable
AT9253/RGB/IP20/2M SKU: 14335	14.4W/m RGB IP20 2m LED Strip with cable
AT9253/RGB/IP20/5M SKU: 16538	14.4W/m RGB IP20 5m LED Strip with cable

For all compatible accessories and drivers see pages 25-29

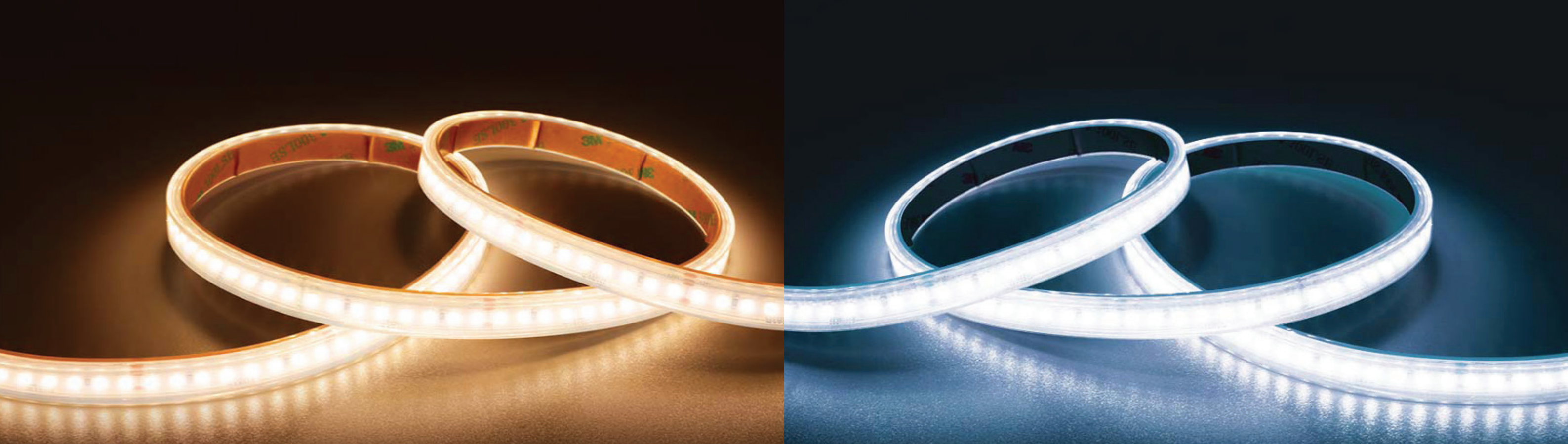


IP67 LED Strips

Built with a UV stabilized silicone sleeve, these strips are ideal for use outdoors or areas where protection against moisture is needed.

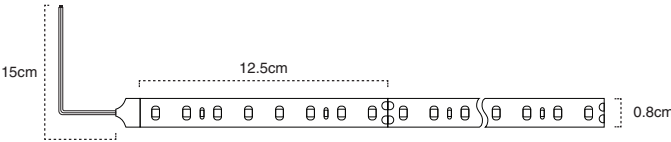
\* Dimmable option compatible with most standard universal and trailing edge dimmers





AT9251 IP67

LED Strip with cable – IP67 – 4.8W/m





Wattage  
4.8W/m



Efficiency  
up to 114lm/W



IP Rating  
IP67

Product specification

Voltage	24Vdc
Power consumption	4.8W/m
Dimmable	Yes*
Input	15cm flying lead
Length	1m & 5m
Cut length	12.5cm
Colour temperature	3000K, 4000K & 5000K
Lumens per meter	
AT9251/CW/IP67/1M AT9251/CW/IP67/5M AT9251/DL/IP67/5M	550lm
AT9251/WW/IP67/1M AT9251/WW/IP67/5M	520lm
Beam angle	120°
Colour rendering index	>90
LEDs/m	64pc/m
IP Rating	IP67
Lifetime Rating	L70B50 >60000 hrs @40°C L80B10 52000 hrs @40°C
Electrical classification	Class III

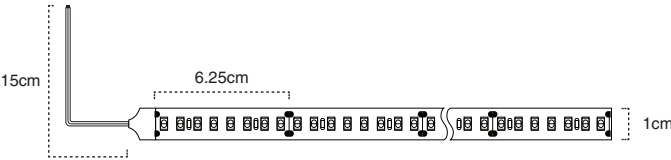
Product range

Code	Description
AT9251/CW/IP67/1M SKU: 16522	4.8W/m IP67 1m LED Strip with cable - 4000K - Cool White
AT9251/CW/IP67/5M SKU: 16557	4.8W/m IP67 5m LED Strip with cable - 4000K - Cool White
AT9251/DL/IP67/5M SKU: 16558	4.8W/m IP67 5m LED Strip with cable - 5000K - Daylight
AT9251/WW/IP67/1M SKU: 16521	4.8W/m IP67 1m LED Strip with cable - 3000K - Warm White
AT9251/WW/IP67/5M SKU: 16556	4.8W/m IP67 5m LED Strip with cable - 3000K - Warm White

For all compatible accessories and drivers see pages 25-29

AT9252 IP67

LED Strip with cable – IP67 – 9.6W/m





Wattage  
9.6W/m



Efficiency  
up to 116lm/W



IP Rating  
IP67

Product specification

Voltage	24Vdc
Power consumption	9.6W
Dimmable	Yes*
Input	15cm flying lead
Length	1m & 5m
Cut length	6.25cm
Colour temperature	3000K, 4000K & 5000K
Lumens per meter	
AT9252/CW/IP67/1M AT9252/CW/IP67/5M AT9252/DL/IP67/5M	1120lm
AT9252/WW/IP67/1M AT9252/WW/IP67/5M	1060lm
Beam angle	120°
Colour rendering index	>90
LEDs/m	128pc/m
IP Rating	IP67
Lifetime Rating	L70B50 >60000 hrs @40°C L80B10 52000 hrs @40°C
Electrical classification	Class III

Product range

Code	Description
AT9252/CW/IP67/1M SKU: 16524	9.6W/m IP67 1m LED Strip with cable - 4000K - Cool White
AT9252/CW/IP67/5M SKU: 16560	9.6W/m IP67 5m LED Strip with cable - 4000K - Cool White
AT9252/DL/IP67/5M SKU: 16561	9.6W/m IP67 5m LED Strip with cable - 5000K - Daylight
AT9252/WW/IP67/1M SKU: 16523	9.6W/m IP67 1m LED Strip with cable - 3000K - Warm White
AT9252/WW/IP67/5M SKU: 16559	9.6W/m IP67 5m LED Strip with cable - 3000K - Warm White

For all compatible accessories and drivers see pages 25-29

\* Dimmable option compatible with most standard universal and trailing edge dimmers

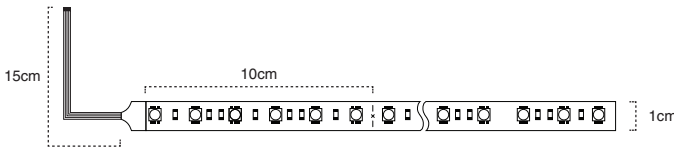
\* Dimmable option compatible with most standard universal and trailing edge dimmers







AT9253 IP67

RGB LED Strip with cable – IP67 – 14.4W/m





Wattage  
**14.4W/m**



IP Rating  
**IP67**

Product specification

Voltage	24Vdc
Power consumption	14.4W/m
Dimmable	Yes*
Input	15cm flying lead
Length	1m & 5m
Cut length	10cm
Colour temperature	RGB
Lumens per meter	340lm
Beam angle	120°
Colour rendering index	>90
LEDs/m	60pc/m
IP Rating	IP67
Lifetime Rating	L70B50 >48000 hrs @40°C
Electrical classification	Class III

Product range

Code	Description
AT9253/RGB/IP67/1M SKU: 16525	14.4W/m RGB IP67 1m LED Strip with cable
AT9253/RGB/IP67/5M SKU: 16562	14.4W/m RGB IP67 5m LED Strip with cable

For all compatible accessories and drivers see pages 25-29

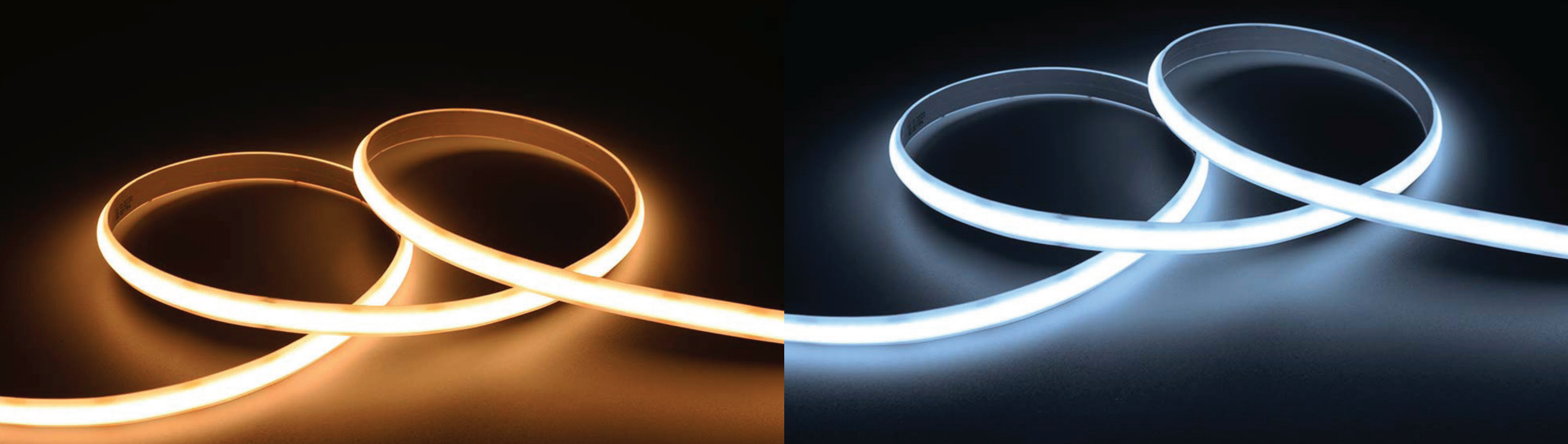


Pureline LED Strips

A continual row of individually packaged LED chips covered by an extruded IP54 weatherproof housing. Atom Pureline LED strips provide a seamless dot-free line of illumination.

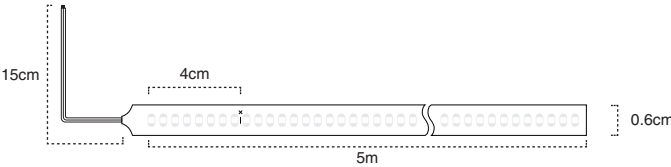
\* Dimmable option compatible with most standard universal and trailing edge dimmers





AT9256

Pureline LED Strip with cable – 7W/m – IP54





Wattage  
**7W/m**



Efficiency  
up to **90lm/W**



IP Rating  
**IP54**

Product specification

Voltage	24Vdc
Power consumption	7W
Dimmable	Yes*
Input	15cm flying lead
Length	1m, 2m, & 5m
Cut length	4cm
Colour temperature	3000K & 4000K
Lumens per meter	
AT9256/CW/1M AT9256/CW/2M AT9256/CW/5M	630lm
AT9256/WW/1M AT9256/WW/2M AT9256/WW/5M	600lm
Beam angle	140°
Colour rendering index	>90
LEDs/m	336pc/m
IP Rating	IP54
Lifetime Rating	L70B50 >54000 hrs @40°C L90B50>54000 hrs @40°C
Electrical classification	Class III

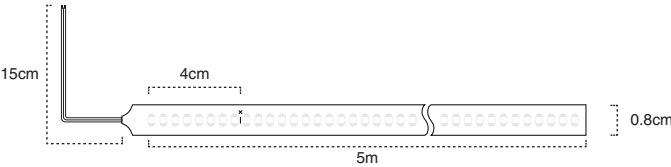
Product range

Code	Description
AT9256/CW/1M SKU: 14320	7W/m 1m Pureline LED Strip with cable - 4000K - Cool White - IP54
AT9256/CW/2M SKU: 14321	7W/m 2m Pureline LED Strip with cable - 4000K - Cool White - IP54
AT9256/CW/5M SKU: 16792	7W/m 5m Pureline LED Strip with cable - 4000K - Cool White - IP54
AT9256/WW/1M SKU: 14322	7W/m 1m Pureline LED Strip with cable - 3000K - Warm White - IP54
AT9256/WW/2M SKU: 14323	7W/m 2m Pureline LED Strip with cable - 3000K - Warm White - IP54
AT9256/WW/5M SKU: 16791	7W/m 5m Pureline LED Strip with cable- 3000K - Warm White - IP54

For all compatible accessories and drivers see pages 25-29

AT9257

Pureline LED Strip with cable – 12W/m – IP54





Wattage  
**12W/m**



Efficiency  
up to **85lm/W**



IP Rating  
**IP54**

Product specification

Voltage	24Vdc
Power consumption	12W
Dimmable	Yes*
Input	15cm flying lead
Length	1m, 2m, & 5m
Cut length	4cm
Colour temperature	3000K & 4000K
Lumens per meter	
AT9257/CW/1M AT9257/CW/2M AT9257/CW/5M	1020lm
AT9257/WW/1M AT9257/WW/2M AT9257/WW/5M	970lm
Beam angle	140°
Colour rendering index	>90
LEDs/m	336pc/m
IP Rating	IP54
Lifetime Rating	L70B50 >54000 hrs @40°C L90B50>54000 hrs @40°C
Electrical classification	Class III

Product range

Code	Description
AT9257/CW/1M SKU: 14325	12W/m 1m Pureline LED Strip with cable - 4000K - Cool White - IP54
AT9257/CW/2M SKU: 14327	12W/m 2m Pureline LED Strip with cable - 4000K - Cool White - IP54
AT9257/CW/5M SKU: 16794	12W/m 5m Pureline LED Strip with cable - 4000K - Cool White - IP54
AT9257/WW/1M SKU: 14324	12W/m 1m Pureline LED Strip with cable - 3000K - Warm White - IP54
AT9257/WW/2M SKU: 14326	12W/m 2m Pureline LED Strip with cable - 3000K - Warm White - IP54
AT9257/WW/5M SKU: 16793	12W/m 5m Pureline LED Strip with cable - 3000K - Warm White - IP54

For all compatible accessories and drivers see pages 25-29





## Accessories

Everything you need to complete your lighting project, including a wide variety of aluminium extrusions, connectors, and remotes.



## Drivers

### AT9643, AT9644, EV-DRIVER-24V – IP20 or IP67 Drivers for LED Strip



IP20 Drivers



IP67 Drivers

SKU	Item code	Product description	Dimmable
11337	AT9643/20	20W 24V Constant Voltage Driver IP20 with Flex and Plug	No
11370	AT9643/60	60W 24V Constant Voltage Driver IP20 with Flex and Plug	No
11404	AT9644/60	60W 24V Constant Voltage Dimmable Driver IP20 with Flex and Plug	Yes
16089	EV-DRIVER-24V-40W-ND	40W 24V Constant Voltage Driver IP67 with 1m Flex and Plug	No
16090	EV-DRIVER-24V-75W-ND	75W 24V Constant Voltage Driver IP67 with 1m Flex and Plug	No
16091	EV-DRIVER-24V-100W-ND	100W 24V Constant Voltage Driver IP67 with 1m Flex and Plug	No
16092	EV-DRIVER-24V-150W-ND	150W 24V Constant Voltage Driver IP67 with 1m Flex and Plug	No
16093	EV-DRIVER-24V-200W-ND	200W 24V Constant Voltage Driver IP67 with 1m Flex and Plug	No





# Extrusion Kits

Add a little extra protection to your LED strip lighting or create a diffused look with the Atom range of aluminium extrusions. Each length contains extrusion, two endcaps, diffuser and mounting clips.

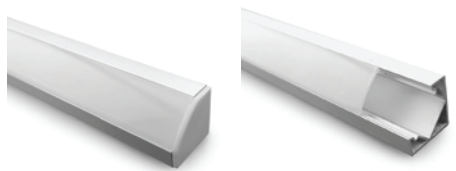
- Aluminium extrusion with easy-fit diffuser
- Square, triangular and round options
- Deep and recessed options available

## AT9220 – Square Shallow Extrusion Kit



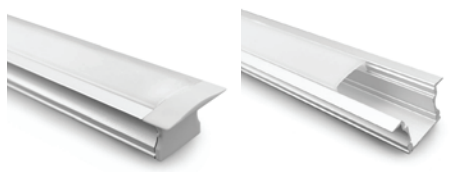
SKU	Item code	Product description	Product height (mm)	Product length (mm)	Product width (mm)	Cutout width (mm)
16678	AT9220/1M	Square Shallow Extrusion Kit - 1M	7	1000	17	–
16679	AT9220/2M	Square Shallow Extrusion Kit - 2M	7	2000	17	–

## AT9227 – Triangular Corner Extrusion Kit



SKU	Item code	Product description	Product height (mm)	Product length (mm)	Product width (mm)	Cutout width (mm)
16685	AT9227/2M	Triangular Corner Extrusion Kit - 2M	18	2000	18	–

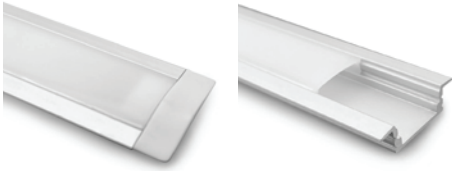
## AT9228 – Square Deep Recessed Extrusion Kit



SKU	Item code	Product description	Product height (mm)	Product length (mm)	Product width (mm)	Cutout width (mm)
16682	AT9228/1M	Square Deep Recessed Extrusion Kit - 2M	15	2000	25	18



## AT9232 – Square Shallow Recessed Extrusion Kit



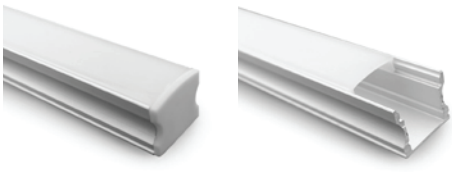
SKU	Item code	Product description	Product height (mm)	Product length (mm)	Product width (mm)	Cutout width (mm)
16681	AT9232/2M	Square Shallow Recessed Extrusion Kit - 2M	7	2000	17	18

## AT9234 – Round Corner Extrusion Kit



SKU	Item code	Product description	Product height (mm)	Product length (mm)	Product width (mm)	Cutout width (mm)
16683	AT9234/2M	Round Corner Extrusion Kit - 2M	16	2000	16	–

## AT9235 – Square Deep Extrusion Kit



SKU	Item code	Product description	Product height (mm)	Product length (mm)	Product width (mm)	Cutout width (mm)
16684	AT9235/2M	Square Deep Extrusion Kit - 2M	15	2000	17	–





# Controllers

- 2.4GHz wireless touch controller
- Control up to 30m
- 16 million colours
- 6A per channel
- 10A max total ouput
- Requires 2 x AAA batteries (not included)

## AT9260 – RGB Controller for LED Strip

AT9260/RGB



SKU	Item code	Product description	Body material	Fitting colour	Input voltage	Working temp. (°C)	Driver current (mA)	Output voltage	Wiring
16647	AT9260/RGB	RGB RF Controller for LED Strip	Polycarbonate	White	12-24	0 to 40	6000	12-24	2 pin

# Amplifiers

Extend your strip lighting over greater lengths to allow for synchronised control.

- Works with all 12/24Vdc PWM controlled LED strip
- High performance switching frequency 10Mbps
- 6A per channel
- 15A total max output

## AT9261 – 4-Channel Amplifier for LED Strip

AT9261/RGB



SKU	Item code	Product description	Body material	Fitting colour	Input voltage	Working temp. (°C)	Driver current (mA)	Output voltage	Wiring
16648	AT9261/RGB	4-Channel Amplifier/Repeater	Polycarbonate	White	DC 12/24	-20 to 60	6000	DC 12/24	2 pin



# Connectors and Endcaps

- Easy to install
- Compatible with AT9251, AT9252 & AT9253 LED Strips
- Endcaps compatible with weatherproof IP54 and IP67 models.

## AT9251, AT9251 & AT9253 – IP20 Corners for LED Strip

Lead-in wire and connectors		Corners	T - joiner	Wire to End Quick Connect	Endcaps
SKU	Item code	Product description			
16575	AT9251/L/IP20	AT9251/IP20 Connectors - Corners - Bag of 10			
16752	AT9251/QCW	AT9251/IP20 Connectors - Wire to End Quick Connect - Bag of 10			
16749	AT9251/QC	AT9251/IP20 Connectors - End to End Quick Connect - Bag of 10			
16576	AT9251/T/IP20	AT9251/IP20 Connectors - T-joiner - Bag of 10			
16584	AT9251/WIRE/IP20	AT9251/IP20 Connectors - 15cm Lead-in Wire and Connectors - Bag of 5			
16578	AT9252/L/IP20	AT9252/IP20 Connectors - Corners - Bag of 10			
16753	AT9252/QCW	AT9252/IP20 Connectors - Wire to End Quick Connect - Bag of 10			
16750	AT9252/QC	AT9252/IP20 Connectors - End to End Quick Connect - Bag of 10			
16579	AT9252/T/IP20	AT9252/IP20 Connectors - T-joiner - Bag of 10			
16585	AT9252/WIRE/IP20	AT9252/IP20 Connectors - 15cm Lead-in Wire and Connectors - Bag of 5			
16581	AT9253/L/IP20	AT9253/IP20 Connectors - Corners - Bag of 10			
16754	AT9253/QCW	AT9253/IP20 Connectors - Wire to End Quick Connect - Bag of 10			
16751	AT9253/QC	AT9253/IP20 Connectors - End to End Quick Connect - Bag of 10			
16582	AT9253/T/IP20	AT9253/IP20 Connectors - T-joiner - Bag of 10			
16586	AT9253/WIRE/IP20	AT9253/IP20 Connectors - 15cm Lead-in Wire and Connectors - Bag of 5			
11541	AT9251/IP67/BOOT*	Silicone End Boots for AT9251 IP67 LED Strip - Bag of 5			
11542	AT9252/IP67/BOOT*	Silicone End Boots for AT9252 & AT9253 IP67 LED Strip - Bag of 5			
11543	AT9256/BOOT*	Silicone End Boots for AT9256 Pureline LED Strip - Bag of 5			
11544	AT9257/BOOT*	Silicone End Boots for AT9257 Pureline LED Strip - Bag of 5			

\*Endcaps must be secured in place using a compatible non-acidic RTV (Room Temperature Vulcanising) liquid silicone adhesive to maintain weatherproof rating of LED strip lights.





## LED Custom Assembly

Complete custom assemblies cut to size.  
Your choice of extrusion and LED strip  
supplied with a 24V constant voltage driver.

atom<sup>i</sup>

## How to choose your LED custom assembly

To see the full range of LED custom assembly options visit [atomlighting.com.au](https://atomlighting.com.au)

**Choose your extrusion** – Aluminum extrusion cut to your desired length, up to 2m



Square Shallow Extrusion



Triangle Corner Extrusion



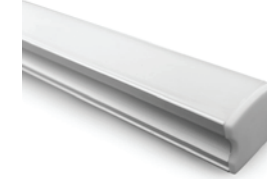
Square Deep Recessed Extrusion



Square Shallow Recessed Extrusion



Round Corner Extrusion



Square Deep Extrusion

**Choose your LED** – Available in a variety of wattages and colours



IP20 4.8W/m

- Available in Warm White, Cool White, and Daylight
- Models include AT9251, LFIP20-4.8W



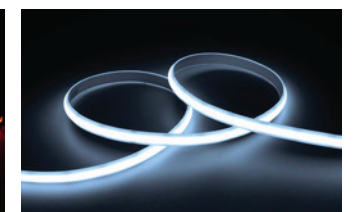
IP20 9.6W/m

- Available in Warm White, Cool White, and Daylight
- Models include AT9252, LFIP20-9.8W



IP20 RGB

- Flexible, quality LED housing
- Superior efficacy
- Model: AT9253



Pureline

- Available in Warm White or Cool White
- Models include AT9256, LFIP20-8DF

**Includes:**



24V power supply with flex and plug  
(image for illustration purposes)



2m tails for easy wiring  
(image for illustration purposes)

For full design and technical data visit [atomlighting.com.au](https://atomlighting.com.au)





**atom**

Due to changes in industry standards and Atom's policy of continual product development, product specifications are subject to change without notice. Images are for illustrative purpose only. E&OE. For more information please visit our website [atomlighting.com.au](https://atomlighting.com.au)

© Evolt June 2022

**evolt**  
sales@evolt.com.au  
PO Box 271  
Kingsgrove NSW 1480  
**evolt.com.au**